

160x139
Rame anticato
Antiqued copper

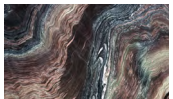
240x100
Alpacca



Brioche Hidro



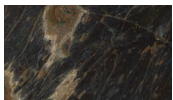
Rosso Lepanto Hidro
Hidro Rosso Lepanto



Cipollino Abyssal lucido
glossy Cipollino Abyssal



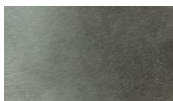
Travertino White opaco
matte Travertino White



Geode lucido
Glossy Geode



Ocean Storm lucido
glossy Ocean Storm
misura max./max size
280x130



Alpacca



Patagonia lucido
glossy Patagonia



Rame anticato
Antiqued copper



Rocky Mountain opaco
matte Rocky Mountain



Ottone anticato
Antiqued brass



Piano tamburato rivestito in **alpacca, in rame anticato o in ottone anticato, con vernice opaca**. Gamba cilindrica in curvato di multistrato rifinito con cemento Terra Cruda (finitura impermeabile minerale, semi deformabile cementizia monocomponente) spatolato a mano da maestri artigiani. Gamba sagomata con forma irregolare in multistrato con rivestimento in pietra con olio protettivo idrorepellente.

Varianti gamba pietra: marmo Cipollino Abyssal lucido, marmo Ocean Storm lucido, marmo Rosso Lepanto Hidro, marmo Travertino White opaco stuccato con resina trasparente; granito Geode lucido, granito Patagonia lucido; quarzite Rocky Mountain opaco e onice Brioche Hidro.

Eventuali imperfezioni presenti, che sono da attribuirsi alla naturalezza delle pietre, possono essere resinate e non sono da considerarsi difetti.

Blocchi e lastre variano visibilmente in quanto pietre naturali; tutte le immagini sono puramente indicative.

Cassa in legno dotata di due sensori per verifica di eventuali danni durante il trasporto. (Fare riferimento a "Avvertenze importanti").

Honeycomb-core top covered with **alpacca, in antiqued copper or antiqued brass, with matte varnish**. Curved poplar cylindrical-shaped leg finished with Terra Cruda concrete (mineral waterproof finishing, semi-deformable mono-component cementitious material) hand-paddled by master craftsmen. Plywood contoured leg with irregular shape with stone covering with water-repellent protective oil.

Leg stone versions: glossy Cipollino Abyssal marble, glossy Ocean Storm marble, Hidro Rosso Lepanto marble, matte Travertino White marble filled with transparent resin; glossy Geode granite, glossy Patagonia granite; matte Rocky Mountain quartzite and Hidro Brioche onyx.

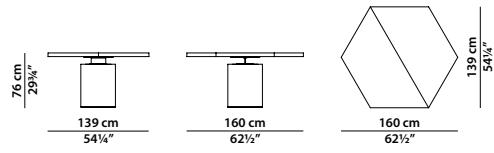
Any blemishes, that are attributable to the naturalness of stones, can be resin-filled and are not to be considered as defects.

Blocks and slabs visibly vary as these are natural stones; all pictures are just a rough guide.

Wooden crate equipped with two sensors to check for any damage during transport. (Refer to "Important information").

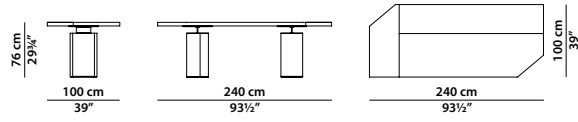
160 x 139 h76

Tavolo. Table.



240 x 100 h76

Tavolo. Table.



280 x 100 h76

Tavolo. Table.

