



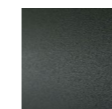
ROD - ROD XL

design Piero Lissoni

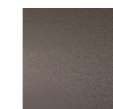
Sofa, armchair and bench with supporting structure in lacquered drawn tubular steel, seat sprung with coated rubber elastic straps and polyurethane foam. Backrest and armrest structure in self-supporting decorative HPL panel. Covering in 100% polyether, thermally bonded onto a polyamide velveteen backing. Backrest and seat cushions in prewashed and sterilized goose down stitched into separate compartments with polyurethane foam insert. The seat cushions are quilted with buttons at sight or, on request, quilted without buttons.

Armrest cushions in polyurethane foam covered with prewashed and sterilized goose down stitched into separate compartments with a poplar plywood supporting panel fixed to the frame by plug-in hinges. Stainless Steel feet, polished or matt satin-finish or in steel laquered in burnished or gunmetal grey colour, screwed to the base with a bushing and with adjustable black PVC tips. Fabric or leather upholstery, both fully removable by zippers and Velcro fastenings. Seat depth: 60–80cm.

Feet



Steel with
Gunmetal
Grey Coating



Burnished
Painted Steel



Stainless Steel
with Polished
Finish

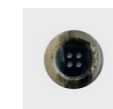


Stainless Steel
with Matt
Satin Finish

Buttons



col. Light

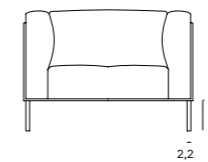
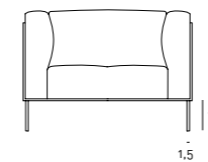


col. Dark

Notes

Rod and Rod XL have undergone and passed the tests of static load, stress resistance and resistance to fall (regulation EN.1728/00), with issue of relative certificate by CATAS®.

Standard feet in tubular Stainless Steel Ø1,5cm; on request available in Ø2,2cm.

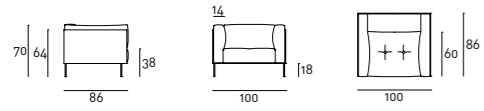


Standard feet Ø1,5cm.

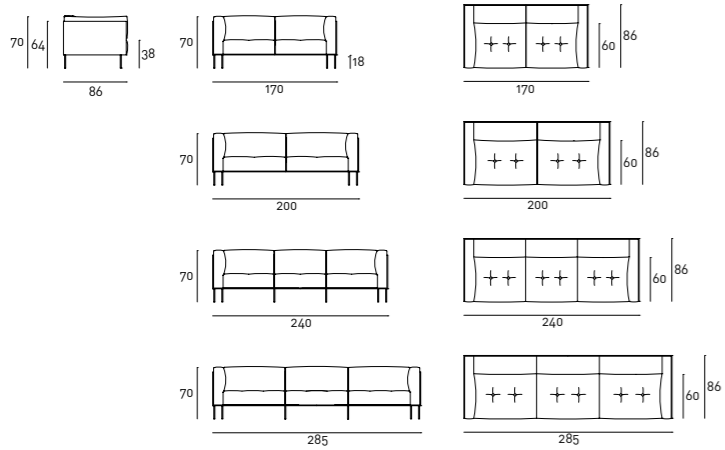
On request, available in Ø2,2cm.

Buttons available in two variants and, as standard, matching the color of the chosen cover. On request, to be specified when ordering, available also contrasting buttons.

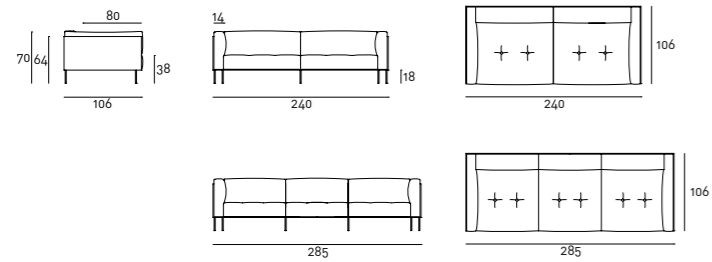
Technical Drawings
Armchair



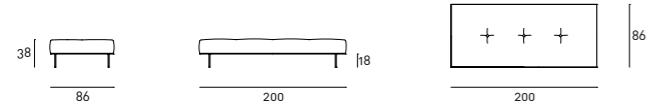
Sofa



Rod XL



Bench



Loose Cushion



