



Minotti Studio design

**Struttura:** interna in metallo verniciato a polveri epossidiche colore Warm Grey.

**Rivestimento paralume:** la parte esterna è rivestita in tessuto di puro Lino naturale al 100% accoppiato a PVC bianco. Il tessuto viene tinto e sottoposto a trattamento anti-sfilo.

**Supporti:** in metallo verniciato color Black-Nickel lucido. Appoggio a terra tramite piedini in PVC Nero opaco. La lampada da tavolo appoggia esclusivamente su piedini in PVC Nero opaco.

**Cavo elettrico:** rivestito con calza in tessuto poliestere nero.

**Interruttore:** cablaggio con interruttore ON/OFF.

**Structure:** epoxy powder-coated metal, Warm Grey colour.

**Lampshade:** the exterior is covered in 100% pure natural Linen laminated to white PVC. The fabric is dyed and treated to ensure non-peel adherence.

**Supports:** metal with varnished polished Black-Nickel finish. Feet in matt Black PVC.

The table lamp comes only with matt Black PVC feet.

**Electric cord:** covered with a black polyester fabric sleeve.

**Switch:** wired with ON/OFF switch.

**Struktur:** Interne Struktur aus mit Epoxidpulver beschichtetem Metall in der Farbe Warm Grey.

**Schirm:** Die Außenseite ist aus 100% reinem Leinen mit einem weißen PVC-Belag.

Der Stoff wird eingefärbt und gegen Ausfransen behandelt.

**Gestelle:** Aus glänzend in Black-Nickel lackiertem Metall. Bodenaufgabe mit Füßchen aus matt schwarzem PVC.

Die Tischlampe stützt sich ausschließlich auf die matt schwarzen PVC-Füßchen.

**Elektrokabel:** Ummantelung aus schwarz Polyester-Stoff.

**Schalter:** Kabel mit ON/OFF-Schalter.

**Structure :** interne en métal, finition peinture en poudre époxy couleur Warm Grey.

**Revêtement abat-jour :** l'extérieur est recouvert de tissu 100% lin naturel enduit PVC blanc.

Le tissu est teint et soumis à un traitement anti-éfilochage.

**Supports :** en métal peint couleur Black-Nickel brillant. Repose sur des pieds en PVC Noir mat.

La lampe de table repose exclusivement sur des pieds en PVC Noir mat.

**Fil électrique :** recouvert de tissu polyester noir.

**Interrupteur :** câblage avec interrupteur ON/OFF.

### LAMPADINE

Lampada da tavolo cm 60x20 H60  
4xMax.20W - LED  
E12 (100-120V) \ E14 (220-240V)

Lampada da terra cm 40x40 H80  
4xMax.20W - LED  
E26 (100-120V) \ E27 (220-240V)

Lampada da terra cm 80x35 H90  
4xMax.20W - LED  
E26 (100-120V) \ E27 (220-240V)

Lampada da terra cm 33x28 H130  
6xMax.20W - LED  
E26 (100-120V) \ E27 (220-240V)

Lampada da terra cm 80x35 H170  
8xMax.20W - LED  
E26 (100-120V) \ E27 (220-240V)

Lampada da terra cm 46,5x33 H170  
8xMax.20W - LED  
E26 (100-120V) \ E27 (220-240V)

Lampada da terra cm 118x35 H170  
16xMax.20W - LED  
E26 (100-120V) \ E27 (220-240V)

### LIGHT BULBS

Table lamp cm 60x20 H60  
4x Max. 20W - LED  
E12 (100-120V) \ E14 (220-240V)

Floor lamp cm 40x40 H80  
4x Max. 20W - LED  
E26 (100-120V) \ E27 (220-240V)

Floor lamp cm 80x35 H90  
4x Max. 20W - LED  
E26 (100-120V) \ E27 (220-240V)

Floor lamp cm 33x28 H130  
6x Max. 20W - LED  
E26 (100-120V) \ E27 (220-240V)

Floor lamp cm 80x35 H170  
8x Max. 20W - LED  
E26 (100-120V) \ E27 (220-240V)

Floor lamp cm 46,5x33 H170  
8x Max. 20W - LED  
E26 (100-120V) \ E27 (220-240V)

Floor lamp cm 118x35 H170  
16x Max. 20W - LED  
E26 (100-120V) \ E27 (220-240V)

### LEUCHTMITTEL

Tischlampe cm 60x20 H60  
4xMax.20W - LED-Lampen  
E12 (100-120V) \ E14 (220-240V)

Bodenleuchte cm 40x40 H80  
4xMax.20W - LED-Lampen  
E26 (100-120V) \ E27 (220-240V)

Bodenleuchte cm 80x35 H90  
4xMax.20W - LED-Lampen  
E26 (100-120V) \ E27 (220-240V)

Bodenleuchte cm 33x28 H130  
6xMax.20W - LED-Lampen  
E26 (100-120V) \ E27 (220-240V)

Bodenleuchte cm 80x35 H170  
8xMax.20W - LED-Lampen  
E26 (100-120V) \ E27 (220-240V)

Bodenleuchte cm 46,5x33 H170  
8xMax.20W - LED-Lampen  
E26 (100-120V) \ E27 (220-240V)

Bodenleuchte cm 118x35 H170  
16xMax.20W - LED-Lampen  
E26 (100-120V) \ E27 (220-240V)

### AMPOULES

Lampe de table cm 60x20 H60  
4xMax 20W - LED  
E12 (100-120V) \ E14 (220-240V)

Lampadaire cm 40x40 H80  
4xMax 20W - LED  
E26 (100-120V) \ E27 (220-240V)

Lampadaire cm 80x35 H90  
4xMax 20W - LED  
E26 (100-120V) \ E27 (220-240V)

Lampadaire cm 33x28 H130  
6xMax 20W - LED  
E26 (100-120V) \ E27 (220-240V)

Lampadaire cm 80x35 H170  
8xMax 20W - LED E27  
E26 (100-120V) \ E27 (220-240V)

Lampadaire cm 46,5x33 H170  
8xMax 20W - LED  
E26 (100-120V) \ E27 (220-240V)

Lampadaire cm 118x35 H170  
16xMax 20W - LED  
E26 (100-120V) \ E27 (220-240V)

**ATTENZIONE:** per ridurre il rischio di surriscaldamento, attenersi alle indicazioni riportate sopra.

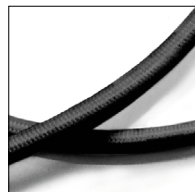
**CAUTION:** to limit the risk of overheating, please follow the instructions indicated above.

**ACHTUNG:** Um das Risiko der Überhitzung zu vermindern, die oben genannten Anweisungen einhalten.

**ATTENTION :** afin de prévenir tout risque de surchauffe, suivre les indications ci-dessus.

### INTERRUTTORE ON/OFF | ON/OFF SWITCH

#### CAVO ELETTRICO, RIVESTITO IN POLIESTERE NERO BLACK POLYESTER COVERED, ELECTRIC CORD



#### LUNGHEZZA CAVO CORD LENGTH



#### LAMPADA DA TAVOLO TABLE LAMP



#### LAMPADINE DA TERRA FLOOR LAMPS



#### FINITURA PARALUME LAMP SHADE FINISH

#### TESSUTO FABRIC



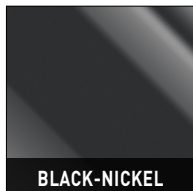
#### STRUTTURA INTERNA INTERNAL STRUCTURE

#### METALLO METAL



#### FINITURA SUPPORTI SUPPORTS FINISH

#### METALLO METAL



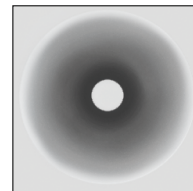
#### FINITURA PIEDINI FEET FINISH

#### PVC



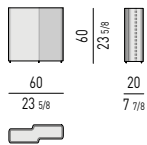
#### EMISSIONE LUMINOSA LIGHT OUTPUT

#### DIFFUSA DIFFUSE

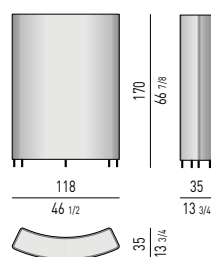
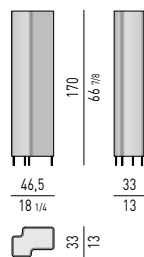
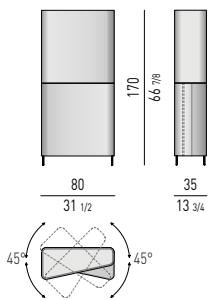
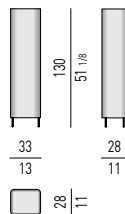
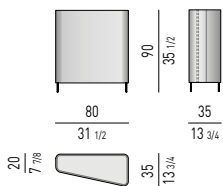
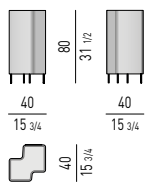


SOLO LAMPADA DA TERRA  
FOR FLOOR LAMP ONLY

## LAMPADA DA TAVOLO | TABLE LAMP



## LAMPADE DA TERRA | FLOOR LAMPS



NEW 2019

ROTAZIONE PARALUME SUPERIORE DI 45°  
UPPER LAMP SHADE ROTATION OF 45°

## NEW 2019 BLANCHE

