

Minotti

ISOLE GORDON GUILLAUMIER DESIGN



Piano: sagomato, realizzato in pietra lavica - spessore mm 20 - con polvere di vetro colorato riciclato, fuso in cottura. Sottopiano strutturale in HPL nero opaco, spessore mm 12. Il tavolino è disponibile nei seguenti colori: Ruggine, Verde, Celadon o Cappuccino.

Gambe: tondini di acciaio inox, Ø mm 22, verniciato lucido color Peltro. Piedino regolabile con puntale in gomma nera

Top: contoured, made of lava stone, 20 mm thick, with recycled coloured glass dust, cast and kiln fired.

Structural underpanel in matt black HPL, 12 mm thick.

The coffee table is available in the following colours: Rust, Green, Celadon or Cappuccino.

Legs: in tubular stainless steel, 22 mm Ø, varnished polished Pewter colour finish.

Adjustable feet with black rubber tip.

Tischplatte: formgeschnitten, aus Lavastein, Stärke 20 mm, mit Pulver aus recyceltem Buntglas, das beim Brennen geschmolzen wird.

Tragende Unterplatte aus HPL in Mattschwarz, Stärke 12 mm. Der Beistelltisch ist folgenden Farben erhältlich: Rostbraun, Grün, Seladon oder Cappuccino.

Beine: Stangen aus Edelstahl, Ø 22 mm, mit glänzender Lackierung in der Farbe Zinn.

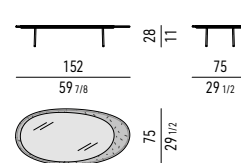
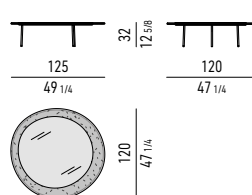
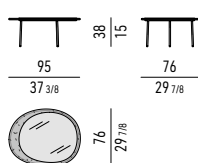
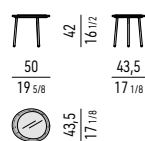
Höhenverstellbarer Fuß mit schwarzem Gummigleiter.

Plateau : façonné, en pierre de lave, 20 mm d'épaisseur, avec de la poudre de verre coloré recyclé, fondu lors de la cuisson. Sous-plateau structurel en HPL noir mat, 12 mm d'épaisseur.

La table basse est disponible dans les couleurs suivantes : Rouille, Vert, Céladon or Cappuccino.

Pieds : tiges d'acier inox, Ø 22 mm, peint couleur Étain brillant.

Pieds réglables avec embout en caoutchouc noir.



OPTIONAL RAIN COVER



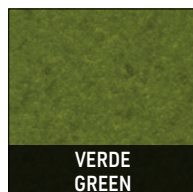
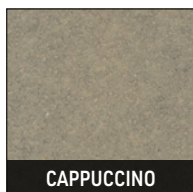
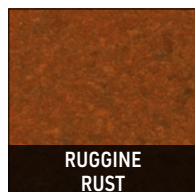
Disponibile per ogni elemento
Available for each element

PIANO TOP

PIETRA STONE



POLVERE DI VETRO COLORATO COLOURED GLASS DUST



GAMBE LEGS

ACCIAIO INOX STAINLESS STEEL

